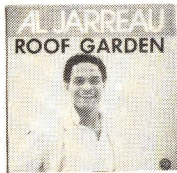


# TIPPARADE



AL JARREAU  
ROOF GARDEN

**ALARMSCHIJF**



**ROOF GARDEN**

al jarreau

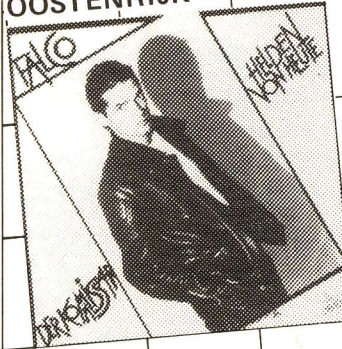
wea 17 834

- 2 9 **PRETTY WOMAN - van halen**  
(templeman) orbison/melson/rush - 17 909 - wea
- 3 4 **OP 'T HOEKJE BRANDT NOG LICHT - mounties**  
(jack de nijs) de nijs/h, taal - 4507 - dureco
- 4 5 **'T IS OM TE BRULLEN - barry hughes**  
(jaap eggermont) jansen/meijer - 141 821 - cnr
- 5 6 **DER KOMMISSAR - falco**  
(falco/r. ponger) idem - 3610 - telstar
- 6 10 **CAN'T HELP MYSELF - icehouse**  
(cameron allan/iva davis) davis - 104 033 - ariola
- 7 18 **SIXTY NINE - brooklyn express**  
(began/cekic) began/cekic - 103 989 - ariola/dance rec.
- 8 22 **HOW MANY TIMES - lori spee**  
(ruud jacobs) l. spee - 6017 307 - phonogram
- 9 19 **THE GIRLS ARE BACK IN TOWN - risqué**  
(j. tilly/c. bais)/b. dunn - 2050 740 - polydor
- 10 21 **A TOWN CALLED MALICE - the jam**  
(pete wilson/the jam) paul weller - 2059 456 - polydor
- 11 14 **IK WIL VOOR MIJN VERJAARDAG 'N DOLLY DOT dingetje**  
(debois/v. asten)/loogman - 18 938 - wea
- 12 15 **YOU COULD HAVE BEEN WITH ME - sh. easton**  
(christopher neil) maalfriid - 006 07583 - emi records

- 13 16 **WELCOME TO THE PARTY - chaplin band**  
(bartels) bartels/soulier/clever - 1444 - inelco/papagayo
- 14 17 **TROUBLE - lindsey buckingham**  
(l. buckingham/r. dashut) buckingham - 6000 758 - phon.
- 15 20 **SENSES WORKING OVERTIME - x t c**  
(hugh padgram/xtc) a. partridge - 103 998 - ariola
- 16 - **RUN AWAY - solution**  
(capaldi/waterman/ennes/enz.) idem - cbsa 2091 - cbs  
FAVORIETSCHIJF
- 17 25 **LES LACS DU CONNEMARA - michel sardou**  
(j. revaux) revaux/sardou/delanoë - 410 171 - inelco
- 18 30 **STREET MUSIC - the bang gang**  
(bobby orlando) b. orlando - 6017 305 - phonogram
- 19 24 **DROWNING IN BERLIN - mobiles**  
(paul lynton) madge/blundell/downton - 4531 - dureco
- 20 23 **TAKE ME DOWN - johnny bristol**  
(gus dudgeon) j.p. pennington/m. gray - 103 677 - ariola
- 21 26 **M'INNAMORO DI TE - ricchie & poveri**  
(reverberi) minellono/farina - br 50001 - inelco
- 22 27 **SANCTA SIMPLICITAS - vulcano**  
(hans van hemert) h. v. hemert - 103 826 - ariola
- 23 28 **THE MODEL - kraftwerk**  
(hutter/schneider) hutter/bartos/schult - 006 64509 - emi rec.
- 24 29 **AM I A DREAMER - kelly groucutt**  
(kelly groucutt) groucutt - pb 6564 - rca
- 25 - **YOU ARE MY SPECIAL ANGEL - timi yuro**  
(jimmy duncan) jimmy duncan - adehs 902 - arcade
- 26 - **WAT 'N RARE MAN - willem duyn**  
(will hoebee) j. peterik/w. duyn - 141 848 - cnr
- 27 - **CALL ME - skyy** (muller/roberts jr) muller, 1067, ramsh.  
**CALL ME - skyy** (muller/roberts jr) muller, xb 2445, rca
- 28 - **STORMY SEAS - the meteors**  
(tilly/the meteors) sinzheimer/bakker - 144 926 - cnr
- 29 - **LOVE IS AN OCEAN - earth and fire**  
(leenders/earth and fire) ruitter/kaagman - 6198 529 - phon.
- 30 - **CHINA - huang chung**  
(bechirian) hues/de spig - 104 062 - ariola

## Disco '82: het wereldgebeuren

OOSTENRIJK



FALCO  
Der Kommissar

Killroy 3610

NEDERLAND



AMERICAN GIPSY  
No hangups

Killroy 3594

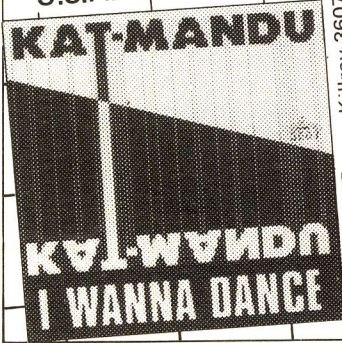
BELGIE



LIPSTICK JOHNNY  
Platz, Je crac

Killroy 3598

U.S.A.



KATMANDU  
I wanna dance

Killroy 3607

Killroy, Postbus 70, 6000 AB Weert